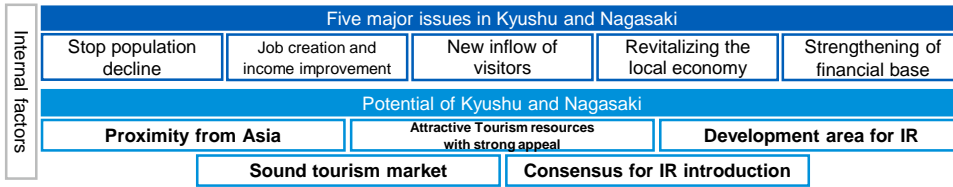


# Summary of Nagasaki IR Basic Concept Plan

## Purposes and Goals of Kyushu-Nagasaki IR

Contributing not only to regional revitalization but also to national goals by introducing the world class IR.

External factors	Global	Japan	Kyushu-Nagasaki
	Tourism industry growth	Promotion of initiatives to realize tourism nation (development of tourism vision)	Promotion of tourism strategy as 'One Kyushu'
	Track record of IR success New IR development projects	Drive to tourism-advanced nation (promoting IR development)	Solution of structural issues by promoting tourism and introducing IR



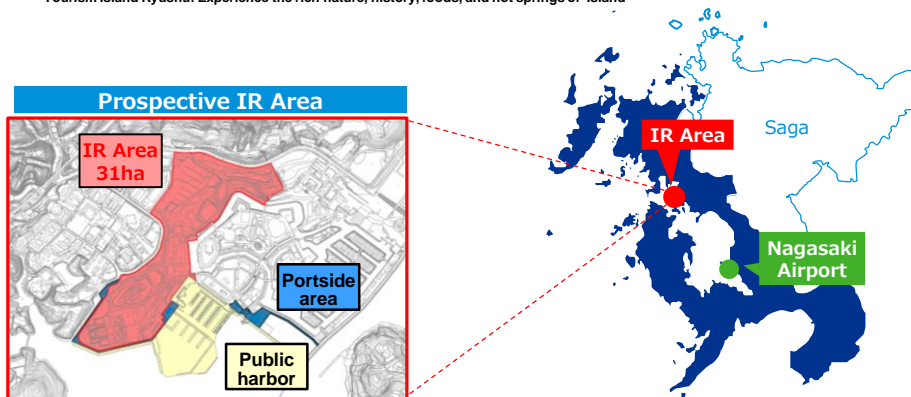
<p><b>Japan as a "tourism-advanced nation"</b></p> <p>By introducing Japanese IR Realizing the stay-type tourism with high international competitiveness &lt;IR Development&gt;</p> <p>By 2030, the number of foreign tourists visiting Japan will reach 60 million and the total consumption will be 15 trillion yen &lt;Sightseeing vision for Japan future&gt;</p>	<p><b>"Regional Revitalization"</b></p> <p>(Work) Quality job creation and income improvement</p> <p>(People) Attract the youth and U/I turn employment to Kyushu-Nagasaki</p> <p>(Community) Support a positive cycle of "work" and "people" by strengthen urban functions</p>	<p><b>Further "Contribution to National Measures"</b></p> <p>Preservation and promotion of border islands in Kyushu</p> <p>Preservation and utilization of cultural heritage history, art, tradition of Kyushu &lt;Cultural economic strategy&gt;</p> <p>Strengthening Kyushu as the Gateway Function Connecting Japan and Asia &lt;National special strategies (Kyushu regional land sustainability plan)&gt;</p>
---	---	--

## Kyushu-Nagasaki IR Concept

### Kyushu-Nagasaki IR Concept      "Kyushu revitalization IR" connecting the world and Japan

■ Three perspectives that Kyushu can contribute to the growth and revitalization of Japan through the realization of the Kyushu-Nagasaki IR

- Gateway Kyushu: Pulling the growth potential of the Asian region as the gateway to Japan
- Showcase Kyushu: Creative activities and spread of Japanese and Kyushu culture
- Tourism Island Kyushu: Experience the rich nature, history, foods, and hot springs of 'Island'



## Facilities and functions that Kyushu and Nagasaki IR should have

<p>「①MICE facilities」</p> <p>Establish the Asian leading resorts MICE destination</p>	<ul style="list-style-type: none"> <li>■ Luxury and segregated meeting facilities for high class</li> <li>■ Explore new incentive MICE demand from cruises visitors</li> <li>■ A national leading convention facility that can accommodate the largest incentive tours (capacity of more than 6,000 people for the largest meeting room and more than 12,000 people for the entire facility)</li> <li>■ Exhibit facilities of a certain size (total leasable floor space of 20,000 square meters or more) that encourage people's interaction and can be used for multiple purposes</li> </ul>	
<p>「②Attractions enhancement facilities」</p> <p>Develop facilities spreading Kyushu/Japan's attraction to the world</p>	<ul style="list-style-type: none"> <li>■ A facility that develops contents of Japan and Kyushu tradition, culture, and performing arts as a show business, and motivate tourists to travel all over Japan and Kyushu                             <ul style="list-style-type: none"> <li>✓ Entertainment of traditional performing arts in Japan and Kyushu</li> <li>✓ Spread of Cool Japan</li> <li>✓ Festival Island Kyushu</li> <li>✓ Spread food culture of Kyushu and Japan</li> </ul> </li> </ul>	<p>Source : Festival island Kyushu</p>
<p>「③Customer transfer facilities」</p> <p>Value added customer experience in Kyushu / Japan</p>	<ul style="list-style-type: none"> <li>■ A facility that creates value-added customer experience through the introduction of showcase and concierge functions utilizing cutting-edge technologies</li> <li>■ Enhancing transportation functions (Operation of transportation hubs including bus terminals)</li> <li>■ Introduction of the entertainment transportation</li> <li>■ Establish a collaborative organization for accelerating wide-area stay-type tourism in Kyushu (including collaboration with tourist information centers and DMOs)</li> </ul>	<p>Source : SkyDrive</p>
<p>「④Accommodation facilities」</p> <p>Unparalleled resort space</p>	<ul style="list-style-type: none"> <li>■ Provision of high-quality services and guest rooms that can meet a wide range of customers and needs, including VIP visitors</li> <li>■ A scale that can meet the increasing demand for accommodation, including MICE demand (total guest floor space is approximately 100,000 square meters or more)</li> <li>■ Space suitable for resort facilities that take advantage of regional characteristics</li> <li>■ A symbolic buildings that become a tourist destination around the world (extraordinary and impressive)</li> </ul>	
<p>「⑤Visitor entertainment facilities」</p> <p>Promotion of an experience type tourism</p>	<ul style="list-style-type: none"> <li>■ Promoting unique features of Kyushu as stay-type tourism contents                             <ul style="list-style-type: none"> <li>✓ Enjoy the seasonal change</li> <li>✓ Nature activities and adventures</li> <li>✓ Showcase of craftsmanship</li> <li>✓ Promote of hot springs and health tourism</li> <li>✓ Gastronomy tourism</li> </ul> </li> </ul>	<p>Source : Kyushu tourism promotion office, Happo-en, Ananda in the Himalayas</p>
<p>⑥Others</p> <p>Additional function of Kyushu-Nagasaki IR</p>	<ul style="list-style-type: none"> <li>■ Development of marine resort-like space utilizing the seaside [Redevelopment of Haiki Port (Huis Ten Bosch Marina &amp; Huis Ten Bosch Harbor)]</li> <li>■ Development of advanced and sustainable tourism resorts by utilizing ICT infrastructure, taking into account the history of the Huis Ten Bosch area being developed as an environment-friendly facility [Realization of innovation]</li> <li>■ Additional function of MICE as evacuation facilities during disasters [Disaster prevention and mitigation functions]</li> </ul>	

# Summary of Nagasaki IR Basic Concept Plan

## Challenges and efforts for IR development

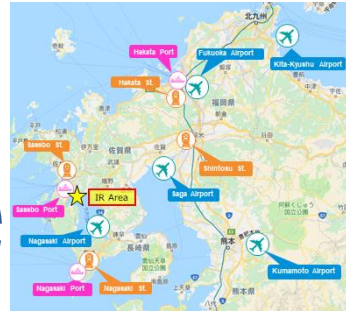
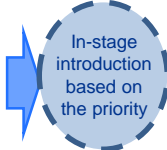
### Strengthen and cooperation of transportation access

#### <Basic policy for transport infrastructure improvement for IR>

- Promotion of wide area transportation network (airport, Shinkansen, road)
- Expansion of transport functions and strengthen the cooperation between public transportation
- Measures for local traffic congestion of the IR area
- Introduction of new transportation that takes advantage of regional characteristics

#### <Specific plans>

- Enhancement of functions at Nagasaki Airport / Cooperation between airports in Kyushu
- Enhancement of railway functions and early development of Kyushu Shinkansen
- Promoting the use of express bus and bus network in Kyushu
- Introducing the faster marine transport between Nagasaki Airport and the IR area
- Development of road network surrounding the IR area
- Provision of mobility services with entertainment

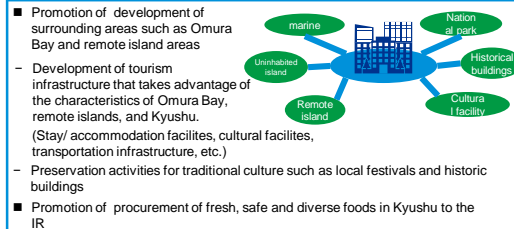


Source : Google map with additional note

### Support organization for MICE invitation

- Expansion of All-Kyushu MICE attraction by strengthening information sharing and collaboration with convention promotion organizations
  - Information collaboration and joint promotion for overseas
  - After-convention activities utilizing Kyushu tourism resources etc.
- Launch of "Platform for support organization of Kyushu / Nagasaki IR and MICE events (tentative name)" participated by both the public and private sectors

### Efforts to revitalize areas outside IR

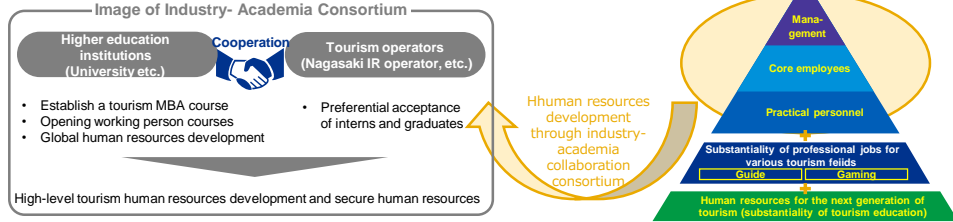


- Promotion of development of surrounding areas such as Omura Bay and remote island areas
- Development of tourism infrastructure that takes advantage of the characteristics of Omura Bay, remote islands, and Kyushu. (Stay/ accommodation facilities, cultural facilities, transportation infrastructure, etc.)
- Preservation activities for traditional culture such as local festivals and historic buildings
- Promotion of procurement of fresh, safe and diverse foods in Kyushu to the IR

## Human resources development for international tourism

### Establishment of industry-academia collaboration consortium between educational institutions and IR operator, etc.

< Overview of tourism human resource development based in Nagasaki IR >



High-level tourism human resources development and secure human resources

## Consensus in Kyushu / Nagasaki Prefecture

### <In Kyushu>

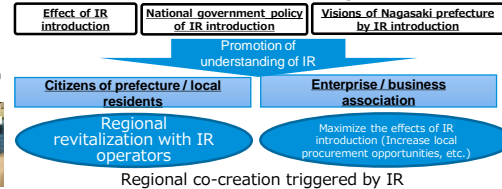
#### Promotion of Nagasaki IR by the private operator, the council and the local government as 'one team'

- < Future goals >
  - Under Kyushu Regional Strategy Council, Kyushu IR Promotion Project Teams was set up by practitioners from each prefecture and economic organization (and the team discusses the way for wide-area cooperation such as establishment of a supply system for local foods)
  - Lobbying activities to the national government by one-All-Kyushu team
  - Cultivation of awareness and momentum in Kyushu business communities for development of IR (holding seminars and forums, etc.)



### <In Nagasaki Pref.>

#### Promoting the understandings and co-creation of the region



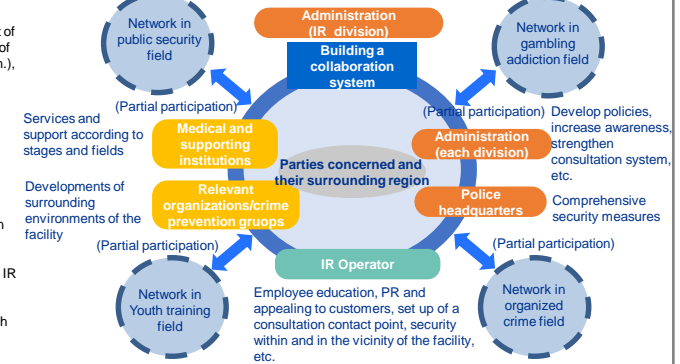
Regional co-creation triggered by IR

## Measures for concerns

### < Developing a collaboration system across the fields >

- In order to develop a cooperative system that enables continuous verification and improvement of measures ( i.e. security maintenance, measures of organized crime and sound development of youth.), wide range of related organizations will work in cooperation with the project.
- Continuous verification and improvement of measures through PDCA cycle
- Vision of cooperative system
  - Securing an environment where IR visitors can use the facilities with peace of mind and responsibility
  - Establishing a foundation for residents around IR area to enjoy a safe, secure, and comfortable local environment
  - For IR Operators, build a good relationship with facility users and the community, and build a society where they can coexist

### < Image of a collaboration system >



## Impact of IR development

### Impact on Kyushu-Nagasaki

- Contribution to the achievement of Kyushu tourism strategy
  - Kyushu brand establishment
  - Tourism infrastructure development
  - Promoting visits to Kyushu
  - Promotion of stay and consumption
- Realization of "Nagasaki tourism-prefecture"
- Contribution to "Community, People, Work comprehensive strategy"
  - Creation of virtuous cycle of "Work", "people"
  - Strong impact for local economy
  - Promote wide-area tourism and strong appeal the local attractiveness etc.

### Impact throughout Japan

- Financial improvement
  - Increase in tax collection due to contribution to local revitalization (stopping population decline, income increase, etc.)
  - gaming tax payment and admission fees by casino facilities
- Contributing to the promotion of tourism and the regional economy
  - Formation of a new wide-area tour route from Kyushu and Nagasaki, as the gateway of Asia
  - Increase in the number and consumption of foreign tourists visiting Japan, and the total number of foreigners staying in Japan

### Estimation of economic ripple effect in Kyushu

- Total number of tourists : 6.9 – 9.3 million people
- Total amount of construction investments : 350 - 460 billion yen
- Economic ripple effect (operation) : 320 – 420 billion yen (construction) : 610 – 810 billion yen
- Job creation effect (operation) : 280 – 360 thousands people (construction) : 630 – 840 thousands people

### Use of GGR tax payment/ admission fee

- Measures for stimulation of tourism
- Measures for stimulation of local economies
- Measures for achieving legal objectives and local governments obligation
- Measures for improvements of social welfare and stimulation of culture/ art
- Measures for problem solving in Kyushu/ Nagasaki such as remote island stimulation

## Assumed schedule

	2018	2019	2020 ~ 2025
National government	Enactment of the IR Development Act	Establishment of Casino Administration Committee, Enactment of Casino Administration Committee's rule etc., Enactment of major enforcement order, rules etc., Publication of the Basic Policies	Approval of IR Area Development Plan, Review of IR Area Development plan, Review of casino license, Obtaining Casino license
Nagasaki prefecture	Formulation of the Basic Policies	Formulation of Implementation Policies, RFP, Procedures for local community acceptance	Conclusion of Implementation agreement, Preparation for opening, Construction, IR Opening
IR Operator	Proposal of IR concept, Dialogue	Preparation of Basic Development Plan, Preparation of IR Area Development plan, Preparation of consortium establishment	Preparation for casino license submission